

On Digital Remote control configuration.

This remote has two Infra Red Transmitters.

The first is used for the standard remote control functions and appears to use the RC80 code.

The second is used for the QWERTY keyboard functions and talks to the Set Top Box decoder as supplied with the remote.

The remote can be programmed to talk to the following On Digital boxes manufactured by:

Nokia, Pace, Phillips, Pioneer, Toshiba and Sony

The remote can be programmed for any of these units by the following method.

Press the **RED and the SELECT key together for 4 seconds** and then key in one of the following codes:

Pioneer	=	900
Nokia	=	901
Phillips	=	903 or 904
Pace	=	905
Toshiba	=	906
Sony	=	907

Remember these codes only effect the non-QWERTY code section of the remote.

I changed the connector and added a second receiver for the non qwerty actions to the set top part of this remote.

First to replace the 9 pin male D-Type with a 9 Way Female to plug into the PC.

1. Cut off the 9 Way connector **about 30 mm from the end.**
2. On the plug end that you cut off, strip back the insulation and bare the ends of the wires. Be careful because they are very fine.
3. Measure between the ends of each wire in turn and record which pins they are connected to using a multi-meter(DVM)
4. These are the colours that were in my remote(they may be different for yours so check carefully).

Pin No.	Wire Colour
1	No Connection
2	Yellow
3	Brown
4	No connection
5	Orange
6	No Connection
7	Black
8	Green
9	No connection

5. Now strip back the cable on the Set Top unit and bare the ends to about 3mm.
6. using a female 9 way D-Type connect the wires as follows:-

Pin No.	Wire Colour
1	No Connection
2	Brown Wire
3	Yellow Wire
4	No connection
5	Orange
6	No Connection
7	Green
8	Black
9	No connection

Substitute your colours if they are different.
Refit the D-Type cover.

Girder configuration

The QWERTY Keyboard requires additional plugins, the ones I have installed are :

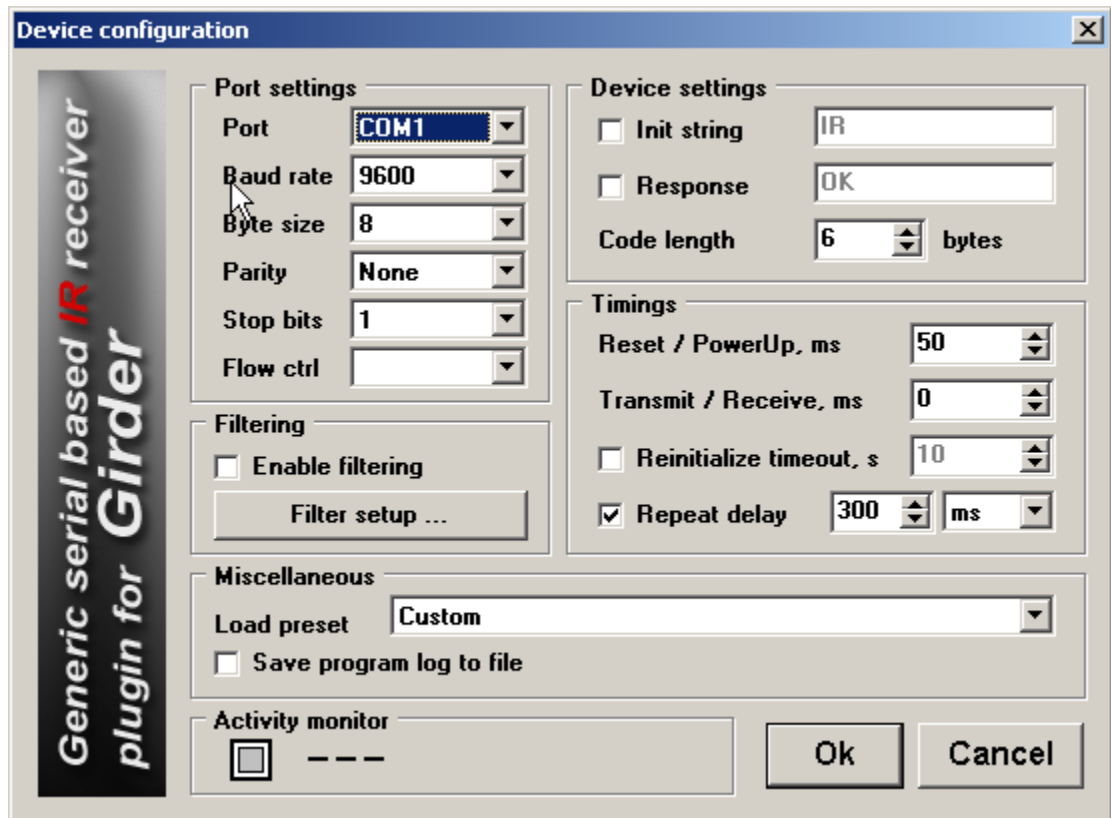
The "Generic serial based IR Receiver

Keyboard

Keyboard driver

ParIR (this is used for my second IR detector used for the non-qwerty keys more later.

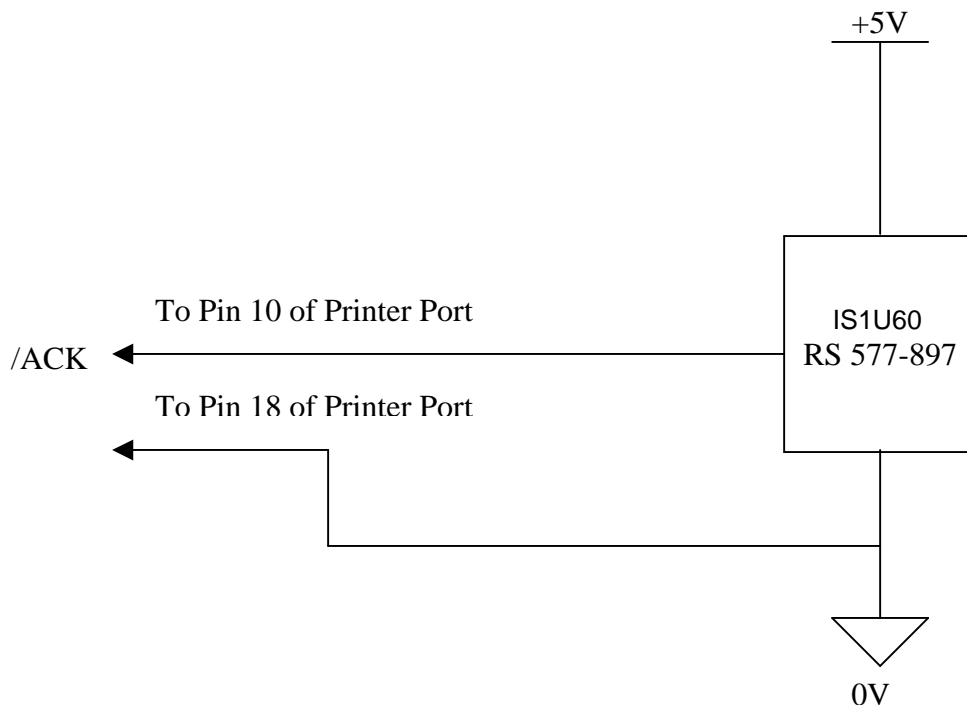
Serial setup



If the serial is working then the Activity monitor on this page should show what's being Received.

The only part I had available on my IN-Car PC was the printer port so I used the following interface:

Receiver circuit:



<http://www.g8stw.demon.co.uk>

Also from

<http://www.letscommunicate.co.uk/carpc/>